

VERTICAL LED TASK LIGHTS

VTL-36-001 (4" or 6" Deep)

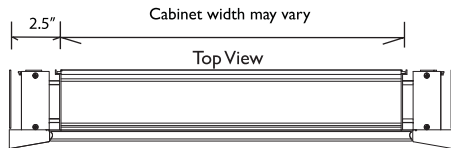
The Vertical Linear LED Task Lights are available with frameless flat and beveled mirror cabinets at heights 24", 30" and 36". Applicable to any width including two cabinet combinations. Sold in pairs. Cabinets purchased separately.

Modular lighting that attaches to side of cabinet. Add 4 3/4" to the width for all Rough Openings and Framing for cabinets with Vertical LED Task Lights. For Roughing-in Opening and Overall Dimensions, see the modified Roughing Dimensions shown in the Vertical LED Task Lights manual that are applicable to all cabinet sizes and models.



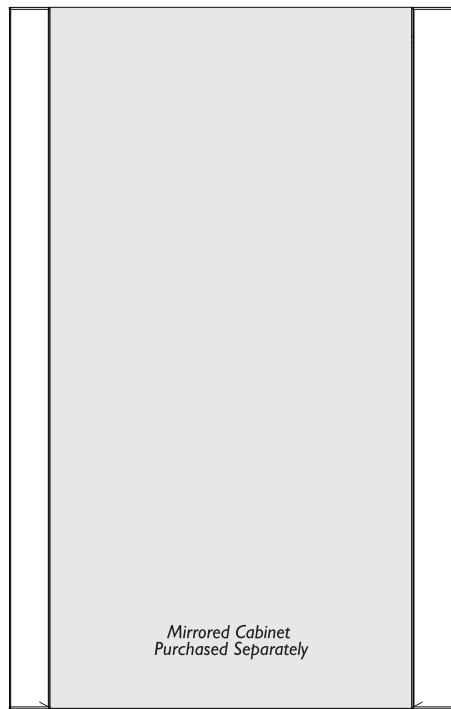
GLASSCRAFTERS INC.

Lights and cabinet can be either Recessed or Surface Mounted

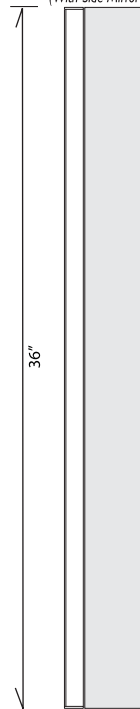


- Minimal, low-profile design (2-1/2" wide per light)
- Modular assembly seamlessly attaches to side of cabinet and is easy to install
- Made with durable, rust-proof aluminum parts
- Features UL recognized components

Front View



Side View (With Side Mirror Kit)



Note: Cabinets combined with Vertical LED Task Lights that are intended to be surface mounted require a Side Mirror Kit.

White Acrylic Diffuser

Brushed Stainless Steel Cover Plate

Functional features:

- Providing integrated task lighting with optimal light output and warm light color for everyday grooming activities
- Linear illumination reduces shadows across your face
- Angled diffuser designed to project precise light towards user's face
- 2700-3000 Kelvin color temperature value (warm white light)
- LED lamping is both energy efficient and longer lasting



Closeup of fixture corner



Note: Vertical LED Task Lights are non-dimming and are not available in custom sizes.

All wiring should be done by a qualified licensed electrician in a manner that conforms to the National Electric Code. See installation instructions for additional information.

GLASSCRAFTERS, INC.
193 Veterans Blvd. Carlstadt, NJ 07072
1+(800) 233-7362 (F) 1+(888) 233-7362
info@glasscraftersinc.com

Products That Reflect Your Style